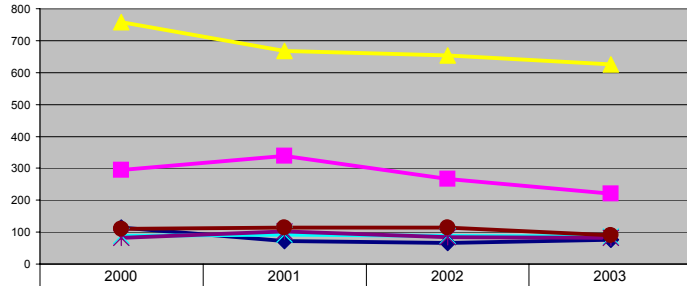


Yates Mass Counts

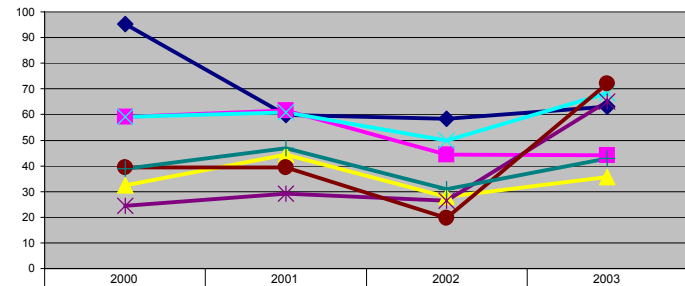
Parish	2000 # Masses	2000 Capacity	2000 Potential	2000 Ave Attend	2000 Capacity Used	2001 # Masses	2001 Capacity	2001 Potential	2001 Ave Attend	2001 Capacity Used	2002 # Masses	2002 Capacity	2002 Potential	2002 Ave Attend	2002 Capacity Used	2003 # Masses	2003 Capacity	2003 Potential	2003 Ave Attend	2003 Capacity Used
St. Andrew's	1	120	120	114	95	1	120	120	72	60	1	114	114	67	58	1	122	122	77	63
St. Januarius	2	250	500	295	59	2	275	550	338	62	2	300	600	266	44	2	250	500	221	44
St. Michael's	4	585	2340	759	32	3	500	1500	667	44	4	585	2340	653	28	3	585	1755	626	36
St. Patrick's	1	150	150	89	59	1	150	150	91	61	1	175	175	87	50	1	125	125	86	68
St. Mary	1	340	340	83	24	1	350	350	102	29	1	315	315	84	27	1	125	125	82	65
St. Theresa/St. Mary	1	280	280	110	39	1	289	289	114	39	2	289	578	114	20	1	125	125	90	72
Yates Total	10	1725	3730	1450	39	9	1684	2959	1385	47	11	1778	4122	1270	31	9	1332	2752	1181	43

Average Weekend Mass Attendance



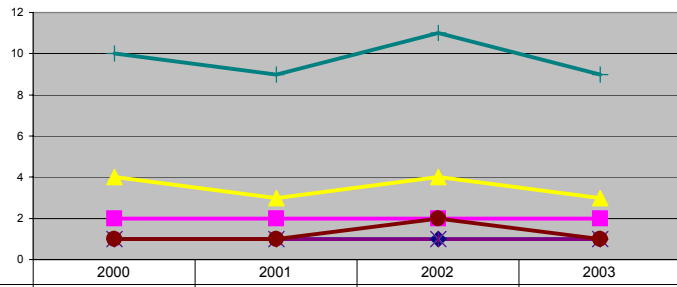
St. Andrew's	114	72	67	77
St. Januarius	295	338	266	221
St. Michael's	759	667	653	626
St. Patrick's	89	91	87	86
St. Mary	83	102	84	82
St. Theresa/St. Mary	110	114	114	90

Ave Worship Capacity Used (Percent)



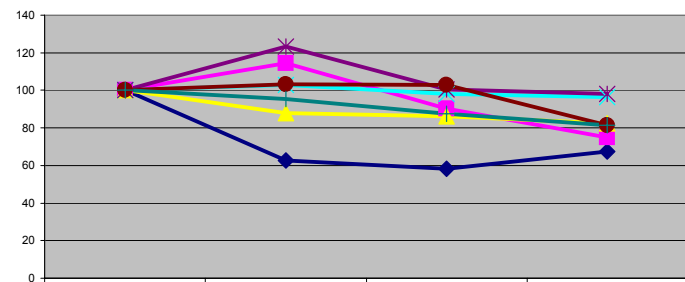
St. Andrew's	95	60	58	63
St. Januarius	59	62	44	44
St. Michael's	32	44	28	36
St. Patrick's	59	61	50	68
St. Mary	24	29	27	65
St. Theresa/St. Mary	39	39	20	72
Yates Total	39	47	31	43

Number of Masses



St. Andrew's	1	1	1	1
St. Januarius	2	2	2	2
St. Michael's	4	3	4	3
St. Patrick's	1	1	1	1
St. Mary	1	1	1	1
St. Theresa/St. Mary	1	1	2	1
Yates Total	10	9	11	9

Change in Ave Weekend Attendance (2000=100)



St. Andrew's	100	63	58	67
St. Januarius	100	115	90	75
St. Michael's	100	88	86	82
St. Patrick's	100	103	98	96
St. Mary	100	123	101	98
St. Theresa/St. Mary	100	103	103	82
Yates Total	100	95	88	81